



## **Information booklet of the Mid Range ML Grand Prix 2026**

8th May – 10th May 2026

Kisbér, Hungary

### Table of contents

Location:	2
Disciplines:	2
Target sizes:	3
The camera system:	3
Food, water and range facilities:	3
The organizing committee:	3
Shooting range information	3
Competition program	4
Important safety rules	5

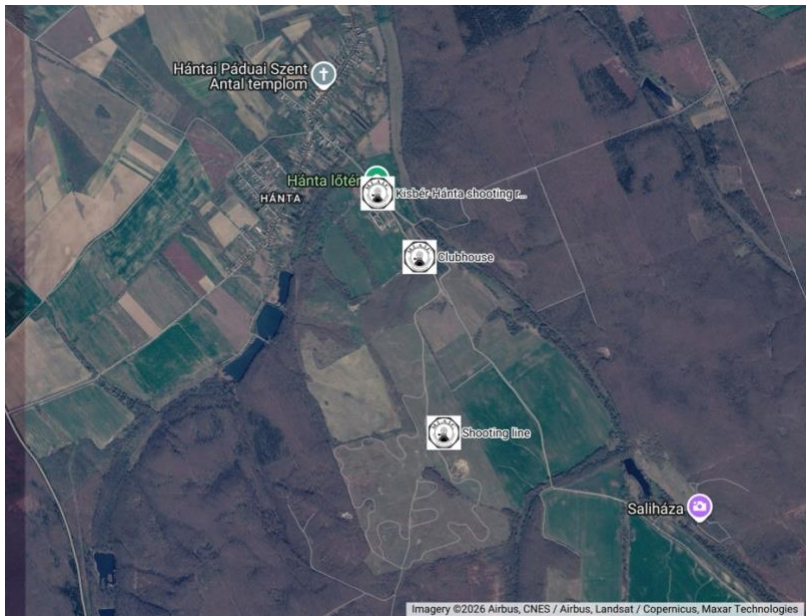
Location:

The competition will be shot at the shooting range located in Hánta near Kisbér  
Please find the location of the range on Google Maps:

<https://maps.app.goo.gl/ur6XWgG7PJdCUuAr6>

Map of the range:

[https://www.google.com/maps/d/edit?mid=14e9Fx07\\_bEkElb0tYfblbvZ-ndspSIw&usp=sharing](https://www.google.com/maps/d/edit?mid=14e9Fx07_bEkElb0tYfblbvZ-ndspSIw&usp=sharing)



GPS coordinates: 47.458441135817644, 18.014401096943267

Locations with address:

Hánta shooting range: Kisbér, Jáger u., 2879

Disciplines:

All disciplines will be shot on the yard system. Team events will not be shot separately, team score (ML open rifle event only) will be calculated from the individual scores of the delegated team members.

### **Muzzleloader open rifle event:**

All rules according to the long range section of the MLAIC rulebook.

<http://mlaic.org/wp-content/uploads/2025/06/MLAIC-Rules-2024.pdf>

### **Military rifle event:**

The rules are based on MLAIC Lamarmora and Minié Rules describing the type of firearm, position,

allowed accessories and loading methods:

Firearm: Muzzle loading military percussion rifle with stock, rifling, trigger, sights matching the

military pattern. Set triggers are not allowed.

Sights: Matching the original military pattern of the rifle. Addition of diopter sights are not allowed.

Minimum calibre: 13.5 mm/.53”.

Bullet: Original style bullets associated with that military rifle.

Position: Prone as described for MLAIC Lamarmora and Minié event, support of the rifle is not allowed.

Accessories: No long loading funnels are allowed. Shooting jacket, shooter's glasses are allowed.

Loading method: wiping the bore between the shots is not allowed.

### **Black powder cartridge event:**

Firearm: Any percussion of cartridge breech loading firearm designed prior to 1900 originally designed for a black powder cartridge.

Sights: Diopter and iron sights allowed. Optics are not allowed.

Cartridge: Cartridges must be charged with black powder.

Accessories: Shooting jacket, shooter's glasses are allowed.

Position: Any position can be used. The rifle can be supported on one point using a sandbag or cross sticks.

### Target sizes:

The competition will be shot on yard basis, using the corresponding target sizes, as they are described in the MLAIC Rule Book 7.9 section.

### The camera system:

The camera system used for the competition will be a modified Long Shot system. Tablets will be provided by the HBSHA to the scorers. Usage of the tablet application will be trained to shooters/scorers after the opening of the match.

### Food, water and range facilities:

Food and drink will not be provided at the range by the organizers. Each shooter needs to bring their own supplies. Grocery shops are located in Kisbér, where supplies can be purchased.

The shooting position is equipped with a roof to provide some protection for rain and sun. Electricity is not available at the range.

### The organizing committee:

<b>E-mail inquiries.:</b>	venczel.szilard@meflsz.hu
Match director:	Gerda Lejeune,
Head of organizing committee:	Balázs Németh
Administration and technical issues:	Szilárd Venczel

### Shooting range information

Orientation of the range: shooting from northeast to southwest.

The area behind and in front of the targets will be cleared from vegetation so the impact of shots missing the target will be visible.

## Competition program

### Day1 8th may 300y

Start	Duration	Program
8:00	1:00:00	Opening, informations, scoring demo at the clubhouse
9:00	1:00:00	Move to the range, preparation
10:00	0:30:00	<b>Practice 1</b>
10:30	0:30:00	target reset
11:00	1:00:00	<b>Relay 1</b>
12:00	1:00:00	target reset, lunch break
13:00	0:30:00	<b>Practice 2</b>
13:30	0:30:00	target reset
14:00	1:00:00	<b>Relay2</b>
15:00	0:30:00	target reset
15:30	0:30:00	<b>Practice 3</b>
16:00	0:30:00	target reset
16:30	1:00:00	<b>Relay3</b>
ca. 18:00		Welcome dinner at the range clubhouse (Traditional Hungarian potato stew cooked in a kettle)

### Day2 9th may 500y

Start	Duration	Program
9:00	0:30:00	<b>Practice 1</b>
9:30	0:30:00	target reset
10:00	1:00:00	<b>Relay 1</b>
11:00	0:30:00	target reset
11:30	0:30:00	<b>Practice 2</b>
12:00	0:30:00	target reset
12:30	1:00:00	<b>Relay2</b>
13:30	1:00:00	target reset, lunch break
14:30	0:30:00	<b>Practice 3</b>
15:00	0:30:00	target reset
15:30	1:00:00	<b>Relay3</b>
16:30		

## Day3 10th May 600y

Start	Duration	Program
9:00	0:30:00	<b>Practice 1</b>
9:30	0:30:00	target reset
10:00	1:00:00	<b>Relay 1</b>
11:00	0:30:00	target reset
11:30	0:30:00	<b>Practice 2</b>
12:00	0:30:00	target reset
12:30	1:00:00	<b>Relay2</b>
13:30	1:00:00	target reset, lunch break
14:30	0:30:00	<b>Practice 3</b>
15:00	0:30:00	target reset
15:30	1:00:00	<b>Relay3</b>
16:30	1:30:00	Admin break
18:00		Awards ceremony

### Important safety rules

- 1 No firearms to be taken onto the firing point without the permission of the Range Officer.
- 2 All shooters are responsible for ensuring that all firearms and ammunition intended to be used are safe to use.
- 3 Hearing and eye protection are mandatory.
- 4 Firearms must be carried muzzle up when moving between the loading area and firing point.
- 5 People may be shooting in front (echelon shooting) either to our left or right, your rifle must be turned at the direction of the target at all times when shooting or adjusting the rifle sights.
- 6 Rifles can only be capped when pointing at your target. Only bring the rifle in full cock when you are intending to fire and you are pointing the rifle at the target.
- 7 It is strictly forbidden to handle powder flasks in the loading or firing line. Powder must be poured into the barrel from vials.
- 8 In case of misfire wait 30 seconds with the rifle pointing on the target, if assistance is required raise your hand and notify the Range Officer.
- 9 All malfunctions must be cleared on the firing point and not brought back to the loading area.
- 10 All fouling/warming shots and miss loads must be fired from the prone or back position into the bullet stop.
- 11 In case of emergency cease fire the arms must remain pointed towards the target and the percussion caps must be removed from the nipples in this status. Then the rifles are to be laid on the ground with hammers in half cock position (if the rifle does not have a half cock position, the hammer must rest on the uncapped nipple). The shooters will then set back from the firing line. Those waiting to shoot will return to the loading area with the barrel of the rifle pointing up.

We wish you and your team a successful competition and a pleasant stay in Hungary!

Yours sincerely:

The Organizing Commenté